



# VINYL PLANK

Oasis Ocean Mountain Eco

DL4501 & DL2501 & DLL1505 | Sandy

**FIBRE  
GLASS**  
SOLID LAYER  
0.5mm THICKNESS

**MICRO  
CERAMIC™**  
ENHANCED  
WEAR LAYER



# DECOLINE VINYL PLANK

As an industry pioneer,  
DecoLine always brings you better solutions for your flooring.

Vinyl flooring is an excellent choice for busy families, being extremely durable, long-lasting, and easy to clean. Rated highly slip-resistant by Australian standards (R10), you can rest assured that your safety is our priority at DecoLine. Our vinyl flooring features beautiful wooden detailing, providing a luxurious feel that is not only safer but also much warmer to walk on, perfect for those first steps in the morning.

DL4501 & DL2501 & DLL1505 | Sandy



## Antibacterial Properties

DecoLine vinyl planks are coated with colourless Ag+ nano sized silver ion particles, resulting in an antibacterial armour. Silver inhibits the growth of bacteria by deactivating bacteria's oxygen metabolising enzymes, which means safer flooring for you and your family.



## Durable and Adaptable

DecoLine vinyl planks are easy to cut to size, locks securely into place and lays perfectly over any flooring surface. Its sturdiness and flexibility ensure the longevity of your flooring for years to come.



## Quick and Easy to Install

DecoLine vinyl planks can be fitted over most existing hard floors as soon as your subfloor is dry, smooth, dust free and in sound condition.



## Tested at Temperatures of up to 80°C

DecoLine vinyl planks have been tested at temperatures between 70°C to 80°C for over 2 years.



## Low Maintenance

DecoLine vinyl planks are simple to care for. All that's required is a quick sweep and a mop with warm water.



## Authentic Timber Feel

DecoLine vinyl planks are a premium and elegant option with a realistic wood look.



## Easy to Repair

DecoLine vinyl planks are designed for easy replacement. Should a plank get damaged it can easily be lifted and replaced with a new one.



## 100% Water Resistant

DecoLine vinyl planks are 100% water resistant, making it an ideal solution for all commercial and domestic environments which may experience frequent spills or wet areas.



## Quiet Acoustic Qualities

DecoLine vinyl planks are perfect for when you want to reduce noise levels in rooms such as playrooms, bedrooms and garage/loft conversions, without the need for an underlay.



## Retains Heat

DecoLine vinyl planks offer superior softness and warmth underfoot when compared to natural wood and stone flooring options.



# WHY CHOOSE DECOLINE?

At DecoLine, we understand the importance of your family's health. That's why our flooring comes equipped with an anti-bacterial shield. Your family will love the luxurious feel and authentic look of DecoLine vinyl flooring. They will believe they are walking on real wood. This 5mm plank comes with a 20 year manufacturer's guarantee and is available in a variety of colours and designs.



**PU COATING LAYER 1**

- Easy to clean & antibacterial
- 100% water resistant

**WEAR LAYER 2**

- 0.5mm enhanced micro ceramic™
- Durable and adaptable

**IMAGE LAYER 3**

- Realistic wood look
- Feel of natural wood

**MIDDLE LAYER 4**

- Extra sound absorption
- Retains heat

**FIBRE GLASS LAYER 5**

- 0.5mm solid thickness
- Prevents contraction & expansion



**6 MIDDLE LAYER**

- The thickest layer, providing rigidity & strength

**7 BALANCE LAYER**

- Support balance of the floor structure
- Fire retardance

**8 DRY BACK LAYER**

- Easy to glue
- Fit over most floors



# COLOUR CHART



● DL2500 ● DL4500



● DL2501 ● DL4501  
● DLL1505



● DLV2514

SPC | DLS814



● DLV2513

SPC | DLS813, DLS813-N



● DLV2512

SPC | DLS812



● DL2507 ● DL4507  
● DLL1501 ● DLV2501

SPC | DLS6511, DLS801



● DL2506 ● DL4506  
● DLL1506



● DL2502 ● DL4502



● DL2504 ● DL4504



● DLL1502



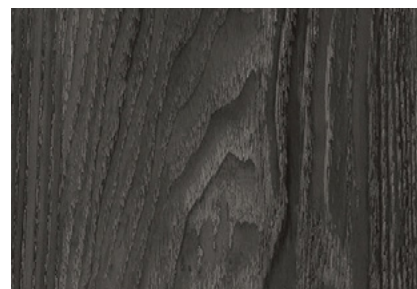
● DL2508 ● DL4508  
● DLL1503 ● DLV2502

SPC | DLS6514, DLS804

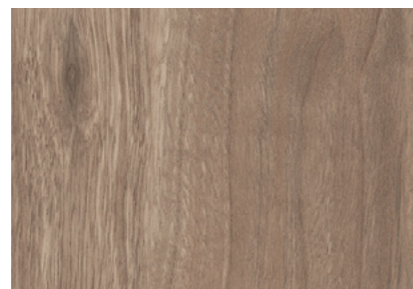


● DLV2515

SPC | DLS815



● DL2503 ● DL4503



● DLL1504

## SPECIFICATIONS

### Oasis

**Size** 1219.2 x 228.6 mm

**Thickness** 2.5 mm

**Surface** 0.5 mm wear layer

**Box Quantity** 4.464 m<sup>2</sup> / 16 pcs / 20.69 kg

**Weight** 4.63 kg / m<sup>2</sup>

### Ocean

**Size** 1219.2 x 228.6 mm

**Thickness** 4.5 mm

**Surface** 0.5 mm wear layer

**Box Quantity** 2.79 m<sup>2</sup> / 10 pcs / 20.72 kg

**Weight** 7.42 kg / m<sup>2</sup>

### Mountain

**Size** 1524 x 228.6 mm

**Thickness** 4.5 mm

**Surface** 0.5 mm wear layer

**Box Quantity** 2.79 m<sup>2</sup> / 8 pcs / 22.5 kg

**Weight** 8.1 kg / m<sup>2</sup>

### Eco

**Size** 1524 x 228.6 mm

**Thickness** 2.5 mm

**Surface** 0.5 mm wear layer

**Box Quantity** 4.18 m<sup>2</sup> / 12 pcs / 18.81 kg

**Weight** 4.5 kg / m<sup>2</sup>



LUXURY  
VINYL  
PLANK



# Ocean & Oasis

DecoLine's Unique Pattern Mixing Methods

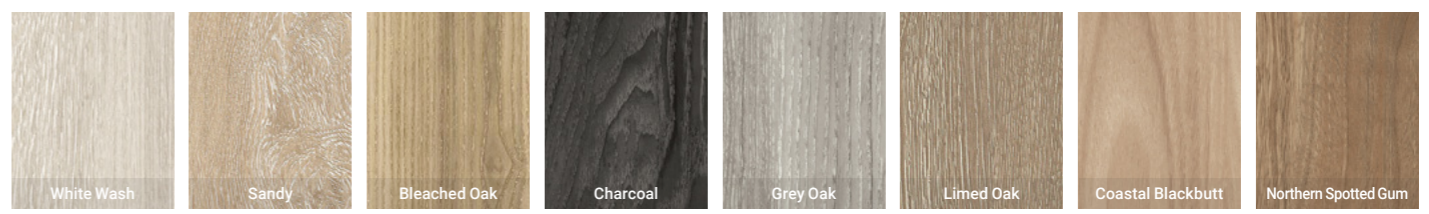
Made in Korea

DL4501 & DL2501 | Sandy



DL4504 & DL2504 | GreyOak

## ROYAL OAK & AUTHENTIC WIDE PLANKS



### SPECIFICATIONS

Range Name	Ocean	Oasis
Plank Size	1219.2 x 228.6 mm	1219.2 x 228.6 mm
Total Thickness	2.5 mm	4.5 mm
Wear Layer Thickness	0.5 mm	0.5 mm
Box Quantity	4.464 m <sup>2</sup> / 16 pcs / 20.72 kg	2.79 m <sup>2</sup> / 10 pcs / 20.69kg
Weight	7.42 kg / m <sup>2</sup>	4.63 kg / m <sup>2</sup>
Impact Sound Reduction	L <sub>nT,w</sub> 53	
Slip Resistance	P3 / R10	P3 / R10
Fire Rating	Pass	Pass







**White Wash**



**Sandy**



**Bleached Oak**



**Charcoal**



**Grey Oak**



**Limed Oak**



**Coastal Blackbutt**



**Northern Spotted Gum**









DL4502 & DL2502 | Bleached Oak



DL4503 & DL2503 | Charcoal 15





16 DL4504 & DL2504 | Grey Oak



DLL1506

DL4506 & DL2506 | Limed Oak





DL4507 & DL2507 | Coastal Blackbutt

DLL1501 & DLV2501 | DLS6511 & DLS801



DLL1503 & DLV2502 | DLS 6514 & DLS 804

DL4508 & DL2508 | Northern Spotted Gum 19



LUXURY  
VINYL  
PLANK



# Mountain

DecoLine's Unique Pattern Mixing Methods

Made in Korea

\* All pictures shown are for illustration purposes only. Actual colours may vary.

DLL1503 | Northern Spotted Gum



DLL1505 | Sandy

## AUTHENTIC LONG & WIDE PLANKS



### SPECIFICATIONS

Plank Size	1524 x 228.6 mm
Total Thickness	4.5 mm
Wear Layer Thickness	0.5 mm
Box Quantity	2.79 m <sup>2</sup> / 8 pcs / 22.5 kg
Weight	8.1 kg / m <sup>2</sup>
Impact Sound Reduction	L <sub>n</sub> T <sub>w</sub> 53
Slip Resistance	P3 / R10
Fire Rating	Pass



Scan  
the QR code





**Coastal Blackbutt**



**Mountain Gum (Northern Blackbutt)**



**Northern Spotted Gum**



**Mountain Spotted Gum**



**Sandy**



**Limed Oak**

DLL1501 | Coastal Blackbutt







DLL1501 | Coastal Blackbutt

DL4507 & DL2507 & DLV2501 | DLS6511 & DLS801



DLL1502 | Mountain Gum (Northern Blackbutt) 25









DLL1505 | Sandy

DL4501 & DL2501



DL4506 & DL2506

DLL1506 | Limed Oak 29



LUXURY  
VINYL  
PLANK

# Eco

DecoLine's Unique Pattern Mixing Methods

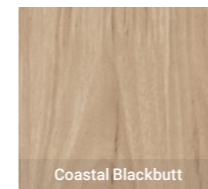
\* All pictures shown are for illustration purposes only. Actual colours may vary.

DLV2514 | Sand Stone

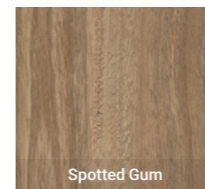


DLV2512 | Silver Moon

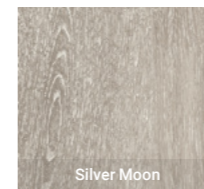
## RUSTIC LONG & WIDE PLANKS



Coastal Blackbutt



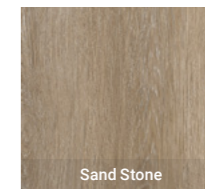
Spotted Gum



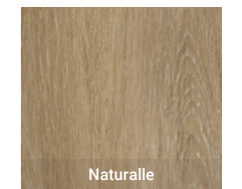
Silver Moon



Pearl (Scarborough)



Sand Stone



Naturalle

### SPECIFICATIONS

Plank Size	1524 x 228.6 mm
Total Thickness	2.5 mm
Wear Layer Thickness	0.5 mm
Box Quantity	4.18 m <sup>2</sup> / 12 pcs / 18.81 kg
Weight	4.5 kg / m <sup>2</sup>
Slip Resistance	P3 / R10
Fire Rating	Pass



Scan  
the QR code





**Coastal  
Blackbutt**



**Spotted Gum**



**Silver Moon**



**Pearl  
(Scarborough)**



**Sand Stone**



**Naturalle**

DLV2513 | Pearl (Scarborough)



DECOLINE'S UNIQUE PATTERN MIXING METHODS





DLV2501 | Coastal Blackbutt

DL4507 & DL2507 & DLL1501 | DLS6511 & DLS801



DL4508 & DL2508 & DLL1503 | DLS 6514 & DLS 804

DLV2502 | Spotted Gum 35









DLV2514 | Sand Stone

DLS814



DLS815

DLV2515 | Naturalle 39



# ACCESSORIES



## ALUMINIUM TRIMS

Length 3.4m



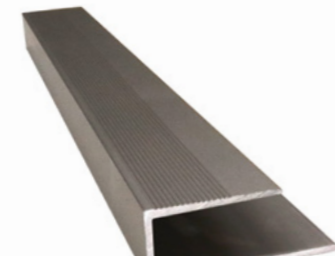
**L-Trim 8mm** KLP228  
Top cover 25mm  
Black Butt & Natural Black Butt / Lemon Gum / Spotted Gum / Crystal / Pearl (Scarborough) / Sand Wood / Honey Oak / Hash Brown / Silver / Bronze / Black / Champagne



**L-Trim 5mm** KLP202  
Top cover 13mm  
Silver / Bronze / Champagne / Black



**Border Strip 5mm** KCS158  
Silver / Bronze / Champagne / Black



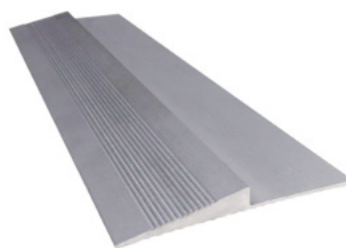
**C-Channel 8mm** KUP406  
Top cover 25mm  
Black Butt & Natural Black Butt / Lemon Gum / Spotted Gum / Crystal / Pearl (Scarborough) / Sand Wood / Honey Oak / Hash Brown / Silver / Bronze / Black / Champagne



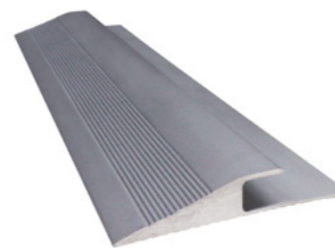
**Universal Cover 43mm** KMC045  
without base & insert  
Black Butt & Natural Black Butt / Lemon Gum / Spotted Gum / Crystal / Pearl (Scarborough) / Sand Wood / Honey Oak / Hash Brown / Silver / Bronze / Black / Champagne



**Base & Insert** KMC045-2  
For Universal Cover (KMC045)  
Mill finish



**Reducer 3mm** KRP369  
3mm vinyl floors  
Silver / Bronze / Champagne / Black



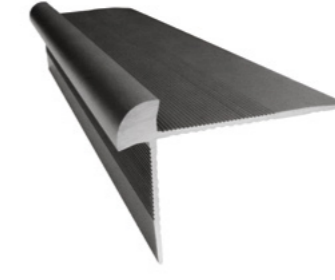
**Reducer 5mm** KRP370  
5mm vinyl floors  
Silver / Bronze / Champagne / Black

## STAIR NOSING

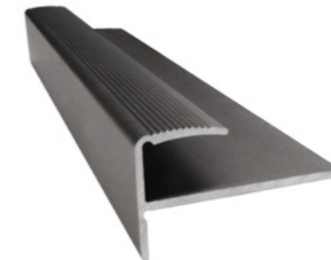
Length 3.4m



**Stair Nosing 3mm** KLP287  
3mm Vinyl floors  
Silver / Bronze / Champagne / Black



**Stair Nosing 5mm** KLP288  
5mm Vinyl floors  
Silver / Bronze / Champagne / Black



**Stair Nosing F-Profile 8mm** KFP472  
Top cover 13mm  
Silver / Bronze / Champagne / Black



**Stair Nosing L-Profile 18mm** KLP212  
Top cover 28mm  
Silver / Bronze / Champagne / Black

## WATER-BASED ACRYLIC ADHESIVE

**W-400H**  
P.V.C. Vinyl & Rubber Flooring



### SPECIFICATION

<b>Feature</b>	White with high - viscosity
<b>Can Be Applied To</b>	Cement, concrete, hardboard, plywood and smoothing compounds
<b>Average Amount Needs</b>	0.3~0.4 kg/m <sup>2</sup>
<b>Validity</b>	One year in original sealed packaging
<b>Store Above</b>	0 °C
<b>Open Time</b>	10~15 minutes
<b>Working Time</b>	30~40 minutes
<b>Available Walking Time</b>	2~3 hours
<b>Complete Hardening Time</b>	More than 24 hours

### FEATURES

Non toxication, no odour, solvent free  
High-adhesion and flexibility

### APPLICATION

Pour the decobond on the substrate and spread it evenly with a notched trowel. Wait up to 10~15 minutes till the glue gets tacky and lay floor coverings within 30~40 minutes. Flatten carefully from the center towards the edges to eliminate air bubbles and ensure a good transfer of the adhesive. Press the floor coverings properly after installation and keep away from water for at least 3 days.



INSTALLABLE PLACES				
Brand	Oasis	Ocean	Mountain	Eco
Size	1219.2 x 228.6 mm	1219.2 x 228.6 mm	1524 x 228.6 mm	1524 x 228.6 mm
Thickness	2.5 mm	4.5 mm	4.5 mm	2.5 mm
Hotels, Offices, Public Buildings, Schools and Kindergartens	O	O	O	O
	O	O	O	O
	O	O	O	O
	O	O	O	O
Supermarkets and Shopping Centres	O	O	O	O
	O	O	O	O
Sporting Facilities	O	O	O	O
	O	O	O	O
Hospitals and Aged Care Facilities	O	O	O	O
External Pavements and Ramps	O	O	O	O
Stair	O	O	O	O

SLIP RESISTANCE				
Brand	Oasis	Ocean	Mountain	Eco
Size	1219.2 x 228.6 mm	1219.2 x 228.6 mm	1524 x 228.6 mm	1524 x 228.6 mm
Thickness	2.5 mm	4.5 mm	4.5 mm	2.5 mm
Grade	P0			
	P1			
	P2			
	P3	O	O	O
	P4			
FIRE RATING				
Brand	Oasis	Ocean	Mountain	Eco
Size	1219.2 x 228.6 mm	1219.2 x 228.6 mm	1524 x 228.6 mm	1524 x 228.6 mm
Thickness	2.5 mm	4.5 mm	4.5 mm	2.5 mm
Result	Pass	Pass	Pass	Pass
ACOUSTIC RATING				
Brand	Ocean		Mountain	
Size	1219.2 x 228.6 mm		1524 x 228.6 mm	
Thickness	4.5 mm		4.5 mm	
Star Rating	1 Star (L nT,w 65)			
	2 Star (L nT,w 60)			
	3 Star (L nT,w 55)			
	4 Star (L nT,w 50)	O		O
	5 Star (L nT,w 45)			

## FAQ

We have a dedicated section on our website that explains lots of frequently asked questions from our customers.

<https://www.decoline.com.au/faq>



## FIND RETAILERS

You can find your nearest Decoline Floors recommended retailers by using the online search feature.

<https://www.decoline.com.au/retailers>



## MAINTENANCE

Decoline Vinyl planks are easy to care for. Our enhanced surfaces are coated with colourless Ag+ nano-sized silver ion particles, resulting in an antibacterial armour. This helps protect against everyday wear, spills and scuffs which means safer flooring for you and your family.

<https://www.decoline.com.au/maintenance>



## WARRANTY

You can claim defects in Decoline Floors if the conditions of our warranty are met. Please check the Decoline warranty file on our website. For more information, please enquire with your local flooring retailer or our Customer Service team.

<https://www.decoline.com.au/warranty>



WE'D LOVE TO HEAR ABOUT YOUR EXPERIENCE WITH US.



Leave us a Google review!






DL4507 & DL2507 & DLL1501 & DLV2501 | Coastal Blackbutt





**CONTACT US**



 [www.decoline.com.au](http://www.decoline.com.au)  
 @decoline\_floors  
 @decolinefloors



\* All pictures shown are for illustration purpose only. Actual colours may vary.