

ULTIMO VINYL PLANK

Installation Guidelines 2.5 & 4.5mm Hard Set Adhesive Fixed

Important note; each project should be installed by a professional flooring contractor or skilled tradesperson. The installation process and method selected is the responsibility of the contractor. You must be satisfied that the contractor is qualified to carry out your site installation. A thorough understanding and inspection of specific site conditions should be undertaken by the installer prior to commencing work. Site specific circumstances along with climatic extremes may require more complex installations methods and maintenance. If applicable, under floor inspections should be carried out before installation. Also note: Ultimo Vinyl Planks are suitable for installation with Hydronic in-slab under-floor heating only. Carefully read the Adhesive manufacturer's instructions to make sure the surface you are bonding to is covered by their warranty provisions and is suitable for the application & location of the install, i.e., wet areas, kitchens etc. **Familiarity with floor preparation noted in Australian Building Regulations, AS 1884-2021 is essential before installation.**

Note: Wet Areas, bathrooms, laundry & powder rooms, please confirm local building code requirements for suitability of installation in wet areas. Many local building jurisdictions will not certify Vinyl Plank installations in wet areas. You must confirm prior to installation.

2.5mm Residential use Only. 4.5mm Residential & Light traffic Commercial use.

PLEASE READ THE FOLLOWING GUIDELINES THOROUGHLY BEFORE COMMENCING INSTALLATION:

Ultimo Luxury Vinyl Planks are uniform and dimensionally accurate. The final fixing is achieved by bonding the planks onto a reputable brand of highly moisture resistant Hard Set (HS) adhesive. HS adhesives will provide an optimum outcome. The adhesive will secure the planks for normal traffic loads. HS permanent bonding is necessary in high temperature locations, generally floor areas exceeding, 40 + degrees Celsius, such as direct sunlight exposure in hot climates & west facing openings. Hard Set adhesive throughout is recommended. Pressure Sensitive (PS) adhesive installations are not covered by warranty as they can be impacted by excessive heat exposure.

Helpful Tips;

Tools required will include; Chalk String Line, 3 m Straight Edge, Commercial quality sharp utility knife or guillotine for scoring and cutting, metal / wooden square, pencil, tape measure, and double-sided adhesive tape. A small hand roller and a minimum 35 - 50kg + roller to smooth out undulations is necessary. **Cutting tip;** Always cut / score from the face of the plank to avoid damaging the visual surface. It's best to use a solid utility knife blade as they are more likely to provide a precise, clean cut. This will help you achieve a professional look and keep your plank waste to a minimum. Cheap utility knives using snap off blades are not tough enough to handle the cutting pressure required to score and cut through the fibreglass construction. **The site should be well ventilated, and installation carried out using personal protective equipment, ear, nose, mouth & eye protection is vital for site health and safety management.**

1. **For both 2.5mm & 4.5mm planks a permanent hard set adhesive method of installation is required for all applications.** This method of adhesion is recommended largely due to the varied climatic conditions experienced throughout Australia and New Zealand. When correctly installed HS adhesive will provide a durable bond when floor surfaces are exposed to consistent 40c + temperatures.
2. **4.5mm Light Commercial use installations will also require a permanent hard set vinyl plank adhesive due to the higher traffic & possible rolling loads of office equipment.**
3. **Substrates,** Ultimo is suitable for installation across a wide variety of substrates that include Concrete, Plywood, Particleboard, Cork, Cement Sheet and Ceramic Tiles etc. **Confirm that the adhesive you have selected is appropriate for the surface you are bonding onto. Wet Areas, bathrooms, laundries & powder rooms refer page 3 for, Adhesive Selection & Application. This method is 'deemed to satisfy' building code requirements for locations that certify Vinyl Plank within wet areas of residential housing and apartments.**
4. As per **Australian Building Regulations, AS 1884-2021,** preparation for floor substrates indicate that sub-floors need to be dry, flat (3mm over a 3m radius) and free of any likely contaminants or substances. **For wood-based substrates** they should be dry (<14%mc), sound with any loose planks or uneven surfaces sanded and or screwed to avoid future movement and noise. Sub-floor bearers & joists may need repair and additional fixing to secure.

www.preferencefloors.com.au

Adelaide (SA)

t +61 8 8262 2774
sa@preferencefloors.com.au

Brisbane (QLD)

t +61 7 3875 1688
qld@preferencefloors.com.au

Melbourne (VIC)

t +61 3 9794 5111
vic@preferencefloors.com.au

Perth (WA)

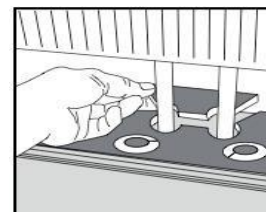
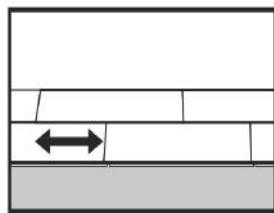
t +61 8 9471 7785
wa@preferencefloors.com.au

Sydney (NSW)

t +61 2 9738 1188
sales@preferencefloors.com.au

Installation Guidelines 2.5 & 4.5mm Hard Set Adhesive Fixed continued:

5. **Concrete surfaces** should be flat and dry, please check for slab moisture content, approx. 2.5 % MC content is required for optimum performance. Moisture seal with a water-based moisture sealer compatible with the adhesive selected. Leveling compound should be left to dry before installation. Follow manufacturer's instructions before installing the Vinyl planks.
6. **Ceramic Tile surfaces** should be sound, no loose tiles or grout. If in doubt, grout lines should be filled to avoid transfer patterns appearing in the surface of the vinyl planks.
7. **Particleboard;** new or old particleboard must be securely screw fixed to avoid future noise transfer **All surfaces and edges need to be fully sanded and moisture sealed with a compatible adhesive sealer prior to any application of adhesive. Please check that the adhesive you have selected is suitable for bonding Vinyl onto Particleboard.** Guidelines must be strictly followed to comply with warranty provisions. Refer: **Australian Building Regulations, AS 1884-2021**
8. **For existing strip timber floors** or similar the surface needs to be level and flat any loose planks, sub-floor joists or bearers should be securely screwed, or nail fixed to avoid future noise transfer and movement. All surfaces and edges need to be fully sanded or covered with Masonite, FC sheet or similar low thickness plywood prior to application of adhesive. This is a normal residential building regulation and must be followed strictly to comply with warranty provisions.
9. **Site storage and acclimatisation.** Ideally the cartons should be delivered to site at least 24 hours before installation commences. Cartons must be stored in a cool, shaded and protected dry place (ambient temperature of 18 – 25 degrees Celsius). **Do not open the packs until the day of installation, ideally remove what is expected to be installed during the day at least 30-60 minutes prior to use.** Blending planks from several cartons will provide a good visual blend. Do not stack excessively high or unevenly as this may result in plank damage hindering assembly times. During colder winter months cartons should be left in their original unopened cartons to acclimatise at room temperature for at least 48 hours.
10. **Each plank should be carefully checked prior to installation. Please confirm colour is consistent with the specified colour as selected / purchased by the client. Check with owner & do not install defective planks.**
11. You will need to establish a starter row that has been aligned from a chalk line running lengthways within the room. **Do not start your floor installation against an existing wall as it may not be straight.** Generally, a starting row should be planned a small distance from a long wall to allow for as many full width planks to be used. Periodic alignment inspections must be carried out throughout the installation.



12. **A staggered pattern** of plank installation is recommended. Starting with a cut plank of a minimum, >300 mm will provide the best visual outcome and importantly is the most waste efficient method of install. Parallel plank joints should be at least 300 mm away from the adjoining plank. This provides a natural plank appearance and enhances the dynamics of the installation. For radiator pipes, installation at radiators. **Drill the holes 10 mm larger** than the diameter of the pipes. Cut out the panel (with the thinnest blade possible) as per diagram. Install the plank as per normal. Glue the cut-out piece back again. **Refer above diagrams.**

Installation Guidelines 2.5 & 4.5mm Hard Set Adhesive Fixed continued:

13. To blend and balance batch variation the installer should always work from several open cartons to create a balanced visual for the installation. Planning the install areas is a critical part of the project. **Planks should be orientated to run in the direction of the longest walls starting from the corner furthest from the entrance.** This will enhance the visual appearance and will enable the installer to work professionally in the workspace whilst the floor is being installed. Hallways ideally should run lengthways.
14. For plank cutting, initially score with a sharp solid knife blade and then with the second cut push through the core structure and fiberglass element of the plank. Fold back and snap off the trim. Make sure all intermediate plank cuts are at 90 degrees to the edge of the plank.
15. **In preparation for gluing, the surface-temperature of the sub-floor at installation should be at least 10-12°C but never exceed 27°C.** For optimum performance the ideal relative humidity should be 45% to 60 % but never below 30% or consistently exceeding 60%. **It is recommended that coverings be placed over the openings or windows to restrict the heat during the installation.**

Adhesive selection & application;

- **For Residential installations**, use a reputable brand of highly moisture resistant **hard-set adhesive** for the general living, kitchen, entertainment, and bedroom areas of the home. **For dedicated wet areas, bathrooms, laundries, powder rooms and hot zones (higher than 40c)**, a durable water resistant permanent hard-set adhesive is required. In all applications the adhesives must be applied full spread with a **1.6 mm V shaped notched trowel**. Popular vinyl adhesive brands include; **Mapei Eco VS90, Roberts 280 HT, RLA 265 & UZIN Pro PE 360.** **In wet areas seal the perimeter of the floor with an anti-bacterial, mould resistant silicone suitable for wet areas, do not connect wet area installs to an adjoining room installation. This method would be 'deemed to satisfy' code requirements.**
- **Light Commercial installations** such as offices, institutional interiors, schools & aged care will require a permanent hard-set moisture resistant Vinyl adhesive. **A reputable adhesive supplier can assist with the correct adhesive selection for Commercial use applications. Remember at all times please read and follow the strict guidelines as indicated by the adhesive manufacturer.**
- **Each plank must be inspected to ensure that the quality is acceptable. No claims relating to visual defects can be accepted after installation.** Once the installation has commenced carefully apply the adhesive consistently to avoid lumpy applications that may result in an uneven, undulating finish. Claims regarding visible defective floor planks must be made prior to installation.
- Use the small hand roller as you go to apply pressure on the planks to improve contact. Carefully clean any excess adhesive if it ends up on the surface of the planks. Use a damp cloth or PH neutral cleaning wipes, workmanship is not covered by the product warranty.
- The adjoining planks should be butted firmly against each other and neatly pressed against any wall and other fixtures. Avoid tight fitting the planks as this may result in peaking at the seams and joints. A heavy weight roller approx. 40kgs is often used to smooth the install. Perimeter expansion is not required.
- For Light Commercial installations it is important that the planks are not overly tight as the higher traffic loads and office furniture movement will certainly create more pressure on the seams and joints.
- Once the main areas have been installed it is important to continue with alignment checks and clean any excess glue or grit of the floor surface. Carefully move the heavy roller across the floor surface, this will assist to even out the install and to fully engage the adhesive with the underside of the plank.
- Your Ultimo Vinyl floor is ready to walk on once the adhesive is set, generally this will be approx. 24 hrs after install, please consult adhesive guidelines. **Avoid any heavy traffic loads or furniture placement for at least 48 hours.** Site cleaning should be done using a broom to clear grit and dust and where necessary and a damp-dry mop if required. **Never use an excessively wet mop or stem mop to clean as it will damage the floor with repeated use.**

www.preferencefloors.com.au

Adelaide (SA)

t +61 8 8262 2774
sa@preferencefloors.com.au

Brisbane (QLD)

t +61 7 3875 1688
qld@preferencefloors.com.au

Melbourne (VIC)

t +61 3 9794 5111
vic@preferencefloors.com.au

Perth (WA)

t +61 8 9471 7785
wa@preferencefloors.com.au

Sydney (NSW)

t +61 2 9738 1188
sales@preferencefloors.com.au

FLOOR CARE AND MAINTENANCE GUIDELINES

You have purchased a high-quality Vinyl Plank product that will not require any special treatment directly after installation. Regular care and maintenance responsibilities are required to better preserve your floor. If you follow these general cleaning and required maintenance guidelines your new floor will perform as intended for many years to come. **An expanded Hybrid & Vinyl floor care document is available on our website for easy reading or download.**

- Immediately after install please make sure the floor is clean and any adhesive spots have been thoroughly cleaned by the installer, if left to permanently dry the adhesive can become difficult to remove. **Follow adhesive manufacturers clean up instructions.**
- Please ensure that an ideal room-climate is maintained whenever possible. Ideal conditions would provide for approximately, 45-60% Air Humidity and 21-25°C room temperatures. This is a comfortable range for indoor climate and provides for optimal health and assists in the overall performance of the floor.
- Daily cleaning should be done with a smooth floor-broom, vacuum cleaner, or static mop. Any sand or dirt should be immediately removed to avoid scratches and damage to the floor surface. Please ensure no metal screws or sharp edges are evident on the vacuum head. **Pet claws should be regularly trimmed to avoid plank scratching and digging damage.**
- **Do not use a Steam Mop**, whenever necessary, the floor surface can be cleaned with a well-rung damp-dry mop. **Do not use conventional household cleaning solutions and detergents, they are abrasive and will damage the surface coating.** PH neutral cleaning solutions are required, please observe, and follow manufacturer's instructions when cleaning. Bona or Loba floor cleaning solutions are recommended. **Be careful not to over water indoor planter pots.**
- It is important that you affix felt strips or suitable protection under any furniture-bases, chair-legs, and commonly movable objects. At entry points and for high traffic areas the use of suitable floor mats to remove entry grit and dirt is recommended. **Avoid the use of animal, rubber, latex, or coco fibre mats as they are likely to stain/bleach your floor. Non-staining mats are required.**
- **Roller or castor chairs should not be used directly on the floor surface.** Protective mats must be placed on the floor surface to avoid a build-up of grit under the castors. **Do not drag or push heavy items across the surface of the vinyl plank floor.**
- **Remember to use window coverings, sun blinds or tinting solutions to help protect your floor from excessive heat and extreme UV light.** Vinyl is sensitive to constant exposure to UV light & heat therefore all installations must have appropriate protection in place to support warranty provisions. Without UV protection the Vinyl will fade over time if left exposed to continuous UV light & heat.
- In case of any plank damage on the surface (e.g., by furniture movement etc.), it is possible to remove damaged planks by pulling up the surrounding area and re-fitting a new plank. Always keep a spare carton of planks for future use.

Disclaimer: Preference Floors has used its reasonable endeavours to ensure the accuracy and reliability of the information contained herein and, to the extent permitted by law, will not be liable for any inaccuracies, omissions, or errors in this information nor for any actions taken in reliance on this information. Products must be installed in accordance with relevant installation recommendations and industry best practices.

www.preferencefloors.com.au

Adelaide (SA)

t +61 8 8262 2774
sa@preferencefloors.com.au

Brisbane (QLD)

t +61 7 3875 1688
qld@preferencefloors.com.au

Melbourne (VIC)

t +61 3 9794 5111
vic@preferencefloors.com.au

Perth (WA)

t +61 8 9471 7785
wa@preferencefloors.com.au

Sydney (NSW)

t +61 2 9738 1188
sales@preferencefloors.com.au